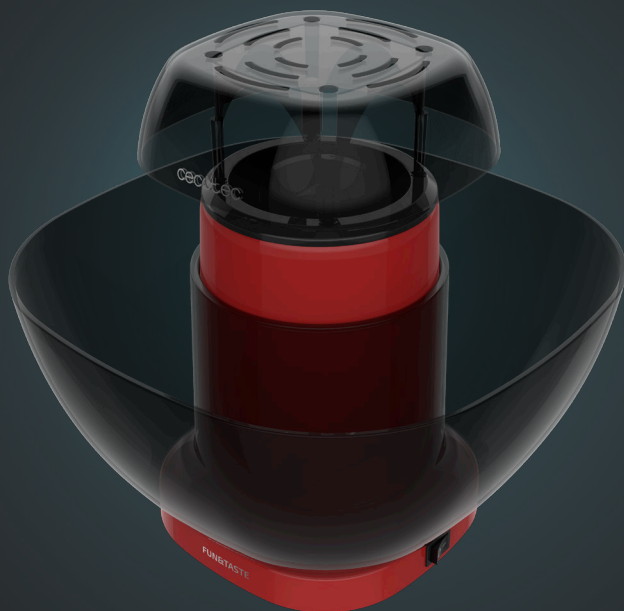


cecotec

FUN&TASTE P'CORN EASY

Palomitero/ Popcorn maker



Manual de instrucciones
Instruction manual
Manuel d'instructions
Bedienungsanleitung
Manuale di istruzioni
Manual de instruções
Handleiding
Instrukcja obsługi
Návod k použití

1. PARTS AND COMPONENTS

Fig. 1.

1. Top cover
2. Corn container
3. Popcorn container
4. Measuring spoon
5. On/Off switch
6. Power cord

NOTE:

The graphics in this manual are schematic representations and may not exactly match the product.

2. BEFORE USE

- This appliance is packaged in a way as to protect it during transport. Take the device out of its box and remove all packaging materials. You can keep the original box and other packaging elements in a safe place. This will help you prevent product damage when transporting it in the future. In case the original packaging is disposed of, make sure all packaging materials are recycled accordingly.
- Make sure all parts and components are included and in good conditions. If any of them are missing or not in good condition, please contact Cecotec's official Technical Support Service immediately.

Box contents

- Fun&Taste P'Corn Easy popcorn maker
- Measuring spoon
- Instruction manual

- Make sure you have read and understood all instructions and warnings in this instruction manual. Pay particular attention to the safety instructions on previous pages.
- Carefully clean and dry the top cover, the popcorn container, and the measuring spoon.
- Place the device on an even, heat-resistant surface. Do not place the device near heat sources, places with high humidity levels, or flammable materials.

Note

You may notice a slight burning smell or smoke when using the product for the first time, caused by the excess of lubricants from the manufacturing process. Ensure good ventilation and let the device run until the smoke and smell dissipate.

3. OPERATION

1. Fill the measuring spoon with a maximum of 80 g of corn.
2. Remove the top cover.
3. Pour the corn kernels into the corn container.
4. Put the cover on top.
5. Plug the device into a power supply.
6. Switch on the device by pressing the on/off switch. The device will start making popcorn.

Warning

- Do not put salt, sugar, oil, butter, or any other food other than corn kernels into the device. Doing so may cause irreparable damage to the product or impair its operation. If you wish to add salt, do it in a separate container.
- Do not use the device without the cover on. Do not remove the cover during operation.
- When the popcorn is ready, switch off, unplug the device from the mains, and let it cool down completely.
- Once cooled down, remove any remaining corn kernels from the corn container.

Note

- It is important to empty the remaining corn kernels from inside the device before using it again to ensure proper operation.
- Allow the machine to cool down for at least 10 minutes between uses.

Recommendation

For better results, use fresh corn kernels. Once the pack of corn kernels has been opened, it should be stored in an airtight container in the refrigerator.

4. CLEANING AND MAINTENANCE

- Turn off, unplug the appliance, and let it cool down before cleaning it.
- Use a soft, damp cloth to clean the outer surface of the product and wipe it dry with a dry cloth or paper towel. Do not use abrasive detergents, steel wool, or scouring pads.
- Wipe the inside of the corn container with a dry cloth. Make sure no liquid enters the cavity of the appliance to prevent damaging it.
- All removable parts of the product should be cleaned regularly with hot soapy water (top cover, popcorn container, and measuring spoon). Allow them to dry completely before reinstalling.
- The top cover, popcorn container, and measuring spoon are dishwasher safe.

5. TECHNICAL SPECIFICATIONS

Product reference: 03262

Model: Fun&Taste P'Corn Easy

Power: 1200 W

Voltage and frequency: 220-240 V~ 50/60 Hz

Technical specifications may change without prior notification to improve product quality.

Made in China | Designed in Spain

6. DISPOSAL OF OLD ELECTRICAL AND ELECTRONIC APPLIANCES



This symbol indicates that, according to the applicable regulations, the product and/or cells must be disposed of separately from household waste. When this product reaches the end of its shelf life, you should dispose of the batteries/accumulators and take them to a collection point designated by the local authorities.

Consumers must contact their local authorities or retailer for information concerning the correct disposal of old appliances and/or their batteries.

Compliance with the above guidelines will help protecting the environment.

7. TECHNICAL SUPPORT AND WARRANTY

Cecotec shall be liable to the end user or consumer for any lack of conformity that exists at the time of delivery of the product under the terms, conditions, and deadlines established by the applicable regulations.

It is recommended that repairs be carried out by qualified personnel.

If at any moment you detect any problem with your product or have any doubt, do not hesitate to contact Cecotec official Technical Support Service at +34 963 210 728.

8. COPYRIGHT

The intellectual property rights over the texts in this manual belong to CECOTEC INNOVACIONES, S.L. All rights reserved. The contents of this publication may not, in whole or in part, be reproduced, stored in a retrieval system, transmitted, or distributed by any means (electronic, mechanical, photocopying, recording or similar) without the prior authorization of CECOTEC INNOVACIONES, S.L.

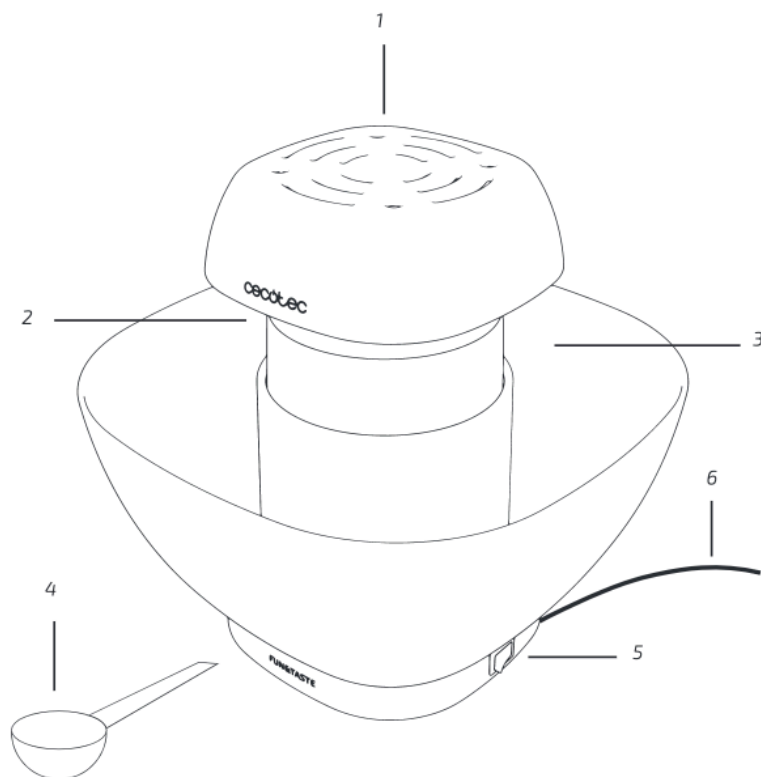


Fig./Img./Abb./Afb./ Rys./Obr. 1

www.cecotec.es

Cecotec Innovaciones S.L.
Av. Reyes Católicos, 60
46910, Alfafar (Valencia), Spain
SF_01240104